

>>> ACT WONDER2S NEWSLETTER

Winter 2024 Updates

CHE HIRING

We're hiring! Do you know someone who wants to join the ACTWONDER2S dream team?



As we plan for the launch of the ACTWONDER2S interventions in the second half of 2024, the team is currently hiring 3 community health educators (CHEs) across different priority zone areas in Florida. We are looking for engaged, self-motivated individuals to host educational events in their respective communities and foster relationships with local organizations. Ideal candidates will have experience in clinical or population science research, health education, community engagement, and working with diverse populations. Bilingual candidates are preferred (English and/or Spanish). CHEs will be stationed in the [Ocala](#), [Fort Myers/Naples](#), and [Lakeland/Orlando](#) areas. If you know someone who might be a good fit, please encourage them to apply via the corresponding link.

QUALITATIVE INTERVIEWS (AIM 1 PHASE 1)

Qualitative interview recruitment and data collection have been completed!

As of February 2024, qualitative interview recruitment for Aim 1 Phase 1 has been completed. As a friendly reminder, the study team interviewed 5 stakeholder groups (community residents, community physicians, Moffitt patients, Moffitt physicians, and Moffitt clinical research coordinators) with 10 participants from each group for a total of 50 interviews. To help move ACTWONDER2S along, we completed an interim analysis used to inform the planning of the user group sessions, and below we highlight findings from stakeholders. Currently, Moffitt's Participant Research, Interventions, & Measurements (PRISM) department is conducting a full comprehensive analysis of the interviews, which will be used to develop a study manuscript.

DIGITAL TOOLS DEVELOPMENT

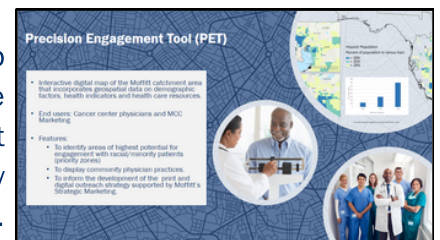
Digital tools development is well underway

In collaboration with the Biostatistics and Bioinformatics Shared Resource (BBSR) team at Moffitt, the ACTWONDER2S study is developing and refining 6 digital tools through a user centered design framework with up to five participants per group session. During these sessions, participants provide real-time feedback on the mockup of a digital tool they were assigned to review with subsequent sessions aimed at further refining the tool. The first set of user group sessions have been completed with the second and third sessions planned for Spring 2024 and Summer 2024, respectively. A summary of each digital tool is listed below for your convenience.



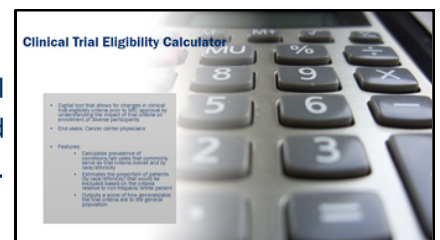
The CHOICES DA is a web-based tool for cancer patients aimed at improving multiple aspects of decision-making related to participation in clinical trials.

The Precision Engagement Tool will display an interactive geospatial map with information on demographics, health indicators, and health care resources to assist in the identification of specific areas with the highest potential for engagement with Black/Hispanic patients and community providers.



The Trial Connect Portal facilitates rapid referral of community patients to open clinical trial opportunities at Moffitt and enhances communication between community providers and Moffitt clinical teams.

The Eligibility Criteria Calculator will provide information to Moffitt clinical investigators about how changes in clinical trial eligibility criteria could impact the eligibility of individuals in specific racial/ethnic groups.



The Recruitment Dashboard dynamically displays information on Moffitt clinical trial enrollment by demographics, catchment area, and trial sponsor.

The Portfolio Profiler allows users to identify gaps in the current clinical trial portfolio which may be contributing to racial/ethnic disparities in trial enrollment.



CHE-LED INTERVENTION COMPONENTS DEVELOPMENT

CHE-led intervention components continue careful refinement

What is a clinical trial?

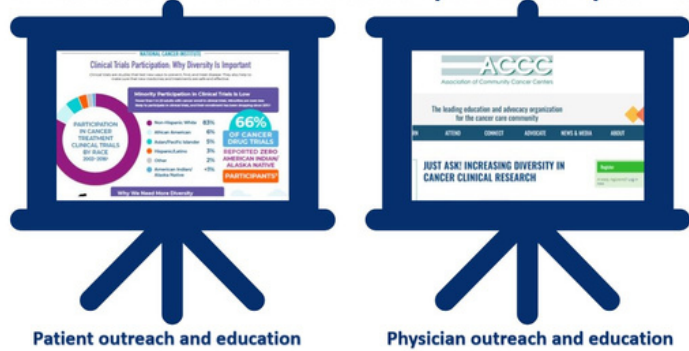
- A clinical trial is a research study that tests how well new medical approaches work in people.
- It is a study that looks for new ways to prevent, find, and treat diseases, like cancer.
- Clinical trials help ensure that newly developed medicines and procedures are safe and effective.
- Clinical trials bring about discoveries that improve public health and treatment in the future.



Source: <https://www.cancer.gov/research/participate/clinical-trials/what-are-clinical-trials>

As part of Aim 1 Phase 2, the ACTWONDER2S study team continues to further refine and finalize the CHE-led content and Continuing Medical Education (CME) materials. The National Cancer Institute developed a clinical trials educational module specifically for CHEs to use, and the module has been used across the country to educate communities about clinical trials. From November to February, the team conducted two rounds of Learner Verification (LV) interviews to modify and refine this module to make sure it was relevant for our community. CHEs will hold community health education sessions about clinical trials in the intervention priority zones using this NCI module. The LV method aids in the development of educational messages to assure it is appropriate for the intended audience. As such, LV participants provided feedback on aspects like the visualization and content within the presentation.

II. Intervention Demo: CHE-led component examples



Patient outreach and education

Physician outreach and education

CONFERENCES

Catch the team at an upcoming conference!

On December 1, 2023, the ACTWONDER2S team presented 5 posters at the annual Moffitt Health Disparities Retreat highlighting various aspects of the study, including but not limited to, the CHE training curriculum, the study design selection process, and patient perspectives on proposed digital tools and CHE-led intervention components. In 2024, ACTWONDER2S will also be presented at the American Association for Cancer Research (AACR) in San Diego, California and American Society of Preventive Oncology (ASPO) in Chicago, Illinois.



Thank You

**WE HAVE COME SO
FAR, AND STILL HAVE
MORE TO GO!**

**BE SURE TO LOOK
OUT FOR ADDITIONAL
UPDATES!**